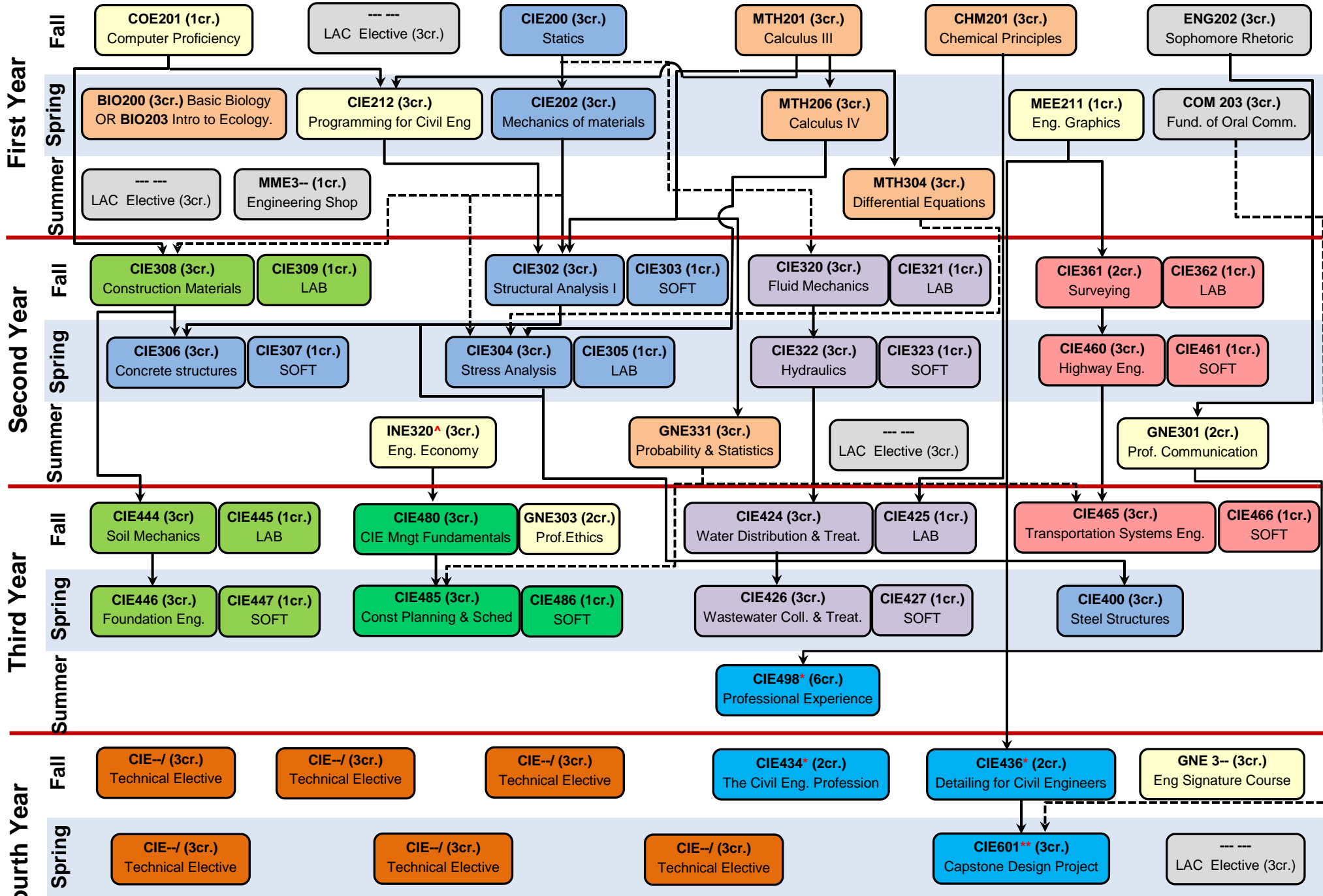


# Civil Engineering Program Flowchart<sup>#</sup>



Collated blocks indicate co-requisite courses

Both arrows indicate a prerequisite course

Elective courses: 120 credits + consent of instructor + pre-requisite if any (Check CIE Catalog)  
 \*120 credits + consent of instructor, \*\*150 credits + consent of instructor, <sup>^</sup>90 credits  
<sup>#</sup>Passing grade in all CIE and MTH courses is a 'C'